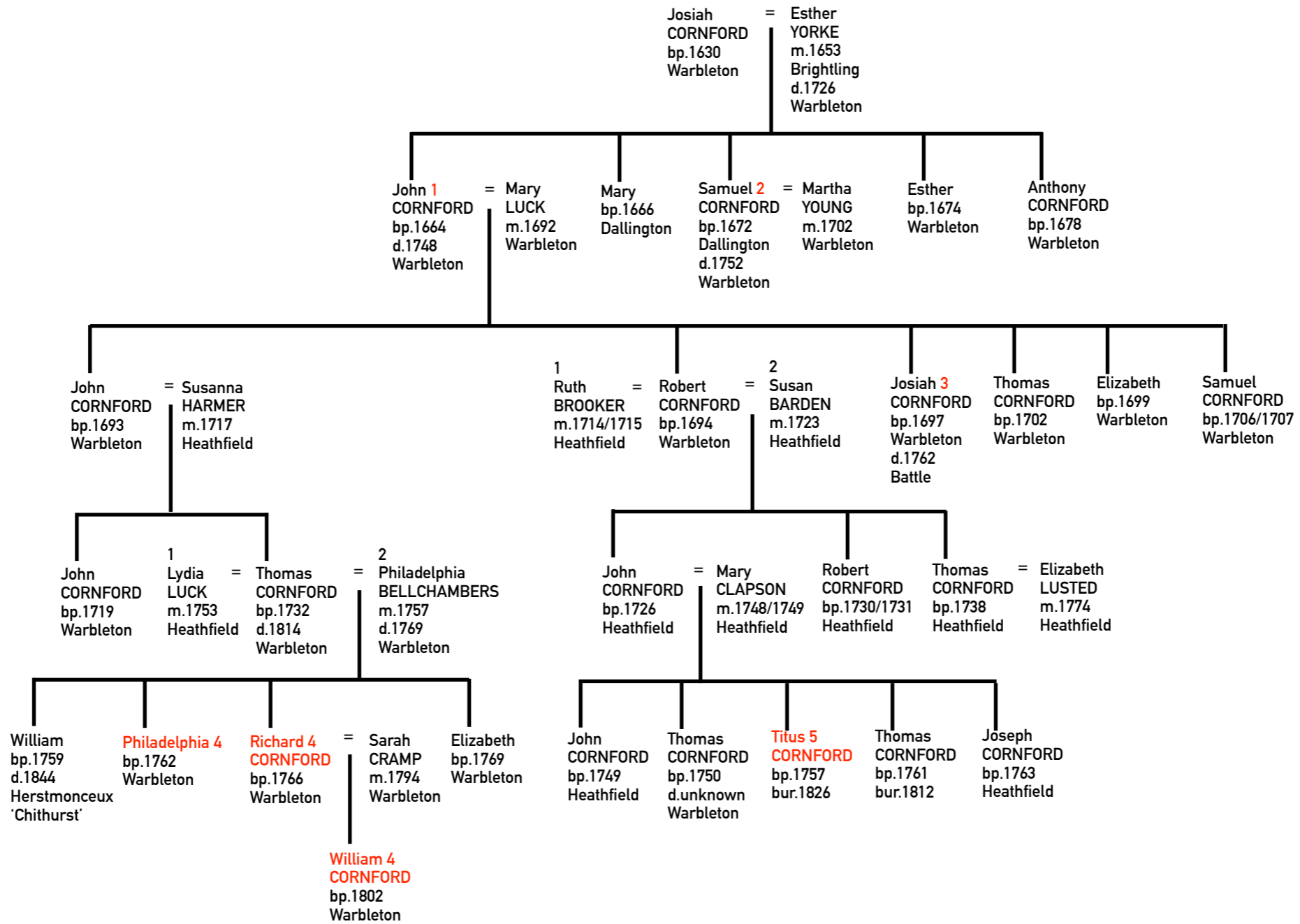
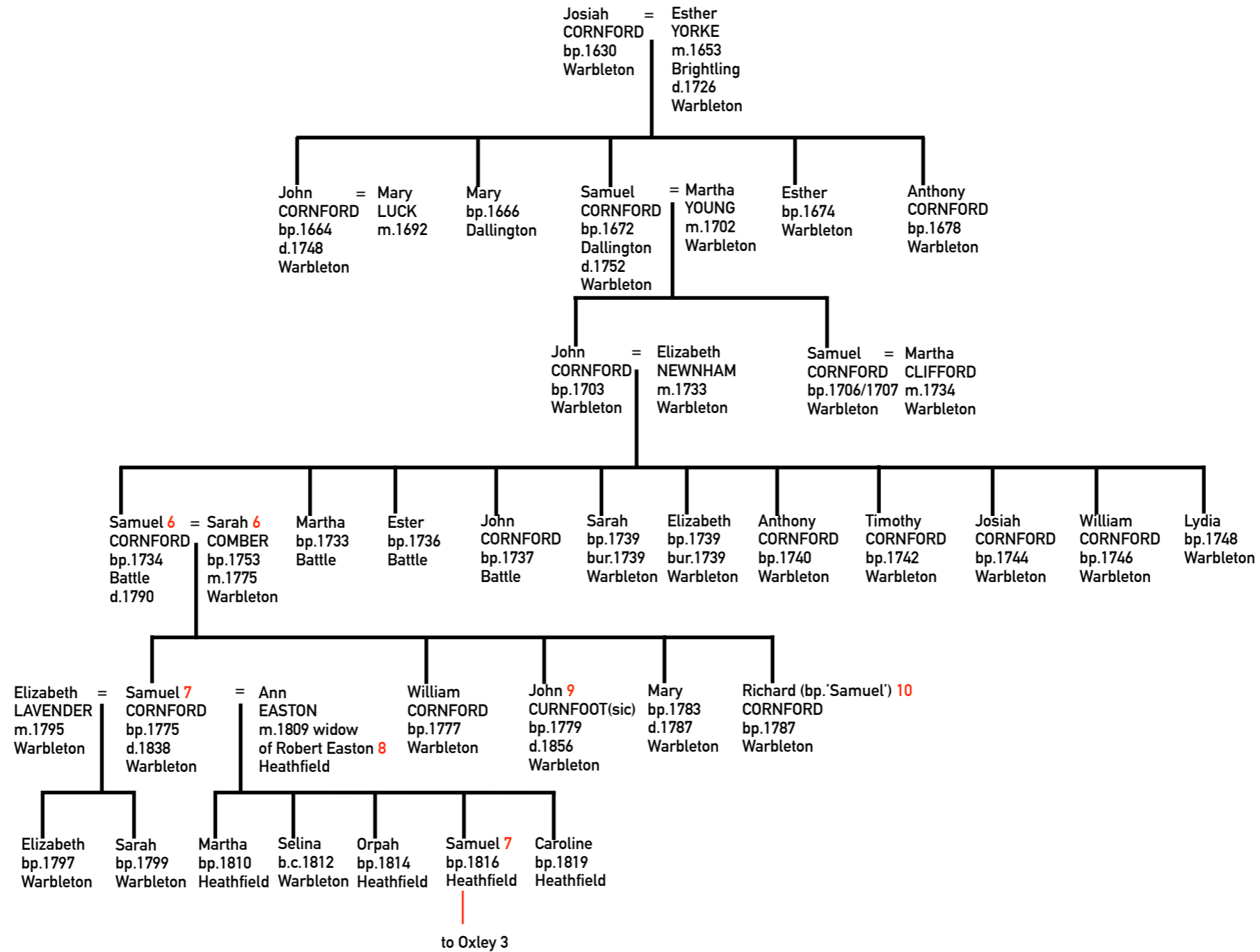


CORNFORD PEDIGREE 1 Page 1 of 6



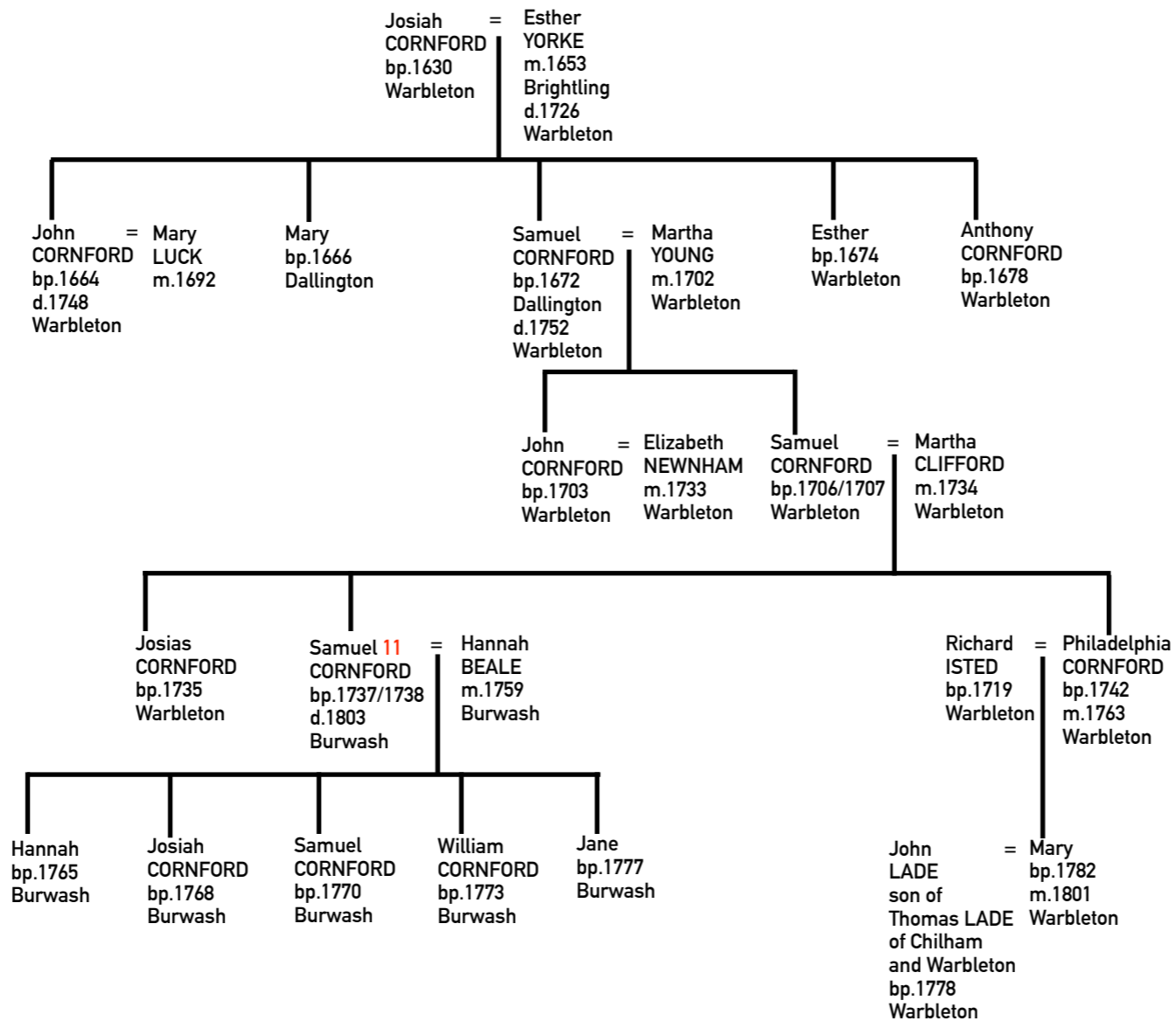
KEY
 SSX Sussex
 Brightling SSX
 Dallington SSX
 Heathfield SSX
 Sedlescombe SSX
 Warbleton SSX

CORNFORD PEDIGREE 2 Page 2 of 6



KEY
 SSX Sussex
 Burwash SSX
 Brightling SSX
 Dallington SSX
 Heathfield SSX
 Warbleton SSX

CORNFORD PEDIGREE 3 Page 3 of 6



KEY
 KEN Kent
 Chilham KEN
 SSX Sussex
 Brightling SSX
 Burwash SSX
 Dallington SSX
 Heathfield SSX
 Warbleton SSX

- 1 John CORNFORD named children in his will, probate 1748, including Frances bp.1714 in Warbleton. John and Mary had other children, Thomas 1695-1697, Marys bp. 1701 and 1704/05, Jane bp.1708/09, Sarah bp.1713 (d.1739) and Stephen bp.1716 who did not survive infancy or died as a young adult.
- 2 Samuel CORNFORD of 'Turners' in Warbleton named his sons John and Samuel CORNFORD in his will, probate 1752.
- 3 Josiah CORNFORD, carpenter of Battle, left a PCC will, probate 15th May 1762.
- 4 Philadelphia was named in the diaries as the sister of Richard CORNFORD. A William CORNFORD was also named as a hop picker and it is likely he was the son of Richard and Sarah.
- 5 Titus CORNFORD who was named in the diaries, was the great grandson of John CORNFORD and Mary LUCK.
- 6 Samuel CORNFORD bp.1734 son of John and Elizabeth, married Sarah COMBER in 1775. A witness at the marriage was a Samuel CORNFORD, and likely Samuel's uncle, bp. 1706. Samuel and Sarah's son Samuel was born in 1775, and died leaving a will in 1838. Sarah COMBER's baptism record has been found on a Bishop's Transcript only on www.ancestry.co.uk.
- 7 Both wills of Samuel who died in 1752 and his great grandson Samuel 1775-1838, name the property 'Turners' and is a significant clue as to the identity of the various Samuels.
The relationships are confirmed through the 1751 will Samuel CORNFORD, who left the property Turners to the eldest son of every future generation.
Samuel junior bp.1816 married four times and died in 1895. Extended pedigrees are available on <https://theweald.org>.
- 8 Robert EASTON died c.1803-1809 and was likely buried at Heathfield Chapel. Robert's mother was Barbery EASTON (née BURTON). A chapel burial entry in 1825 for Mrs EASTON, age 85, was likely the DAME EASTON named in the diary, along with DAME CORNFORD her daughter in law who remarried to Samuel CORNFORD in 1809.
Please see the EASTON pedigree.
- 9 'Uncle John' was enumerated in the 1851 census with Samuel bp.1816 and Samuel's second wife Frances (née PILBEAM).
- 10 Richard CORNFORD b.c.1780s, brickmaker in the censuses, was another son of Samuel and Sarah (Comber), bp. 'Samuel' 1787. There was a R Cornford, Samuel Cornford and William Cornford named in the land tithe record TDE 50, Warbleton, Nov 1837.
- 11 Samuel bp. 1737 in Warbleton, married Hannah BEALE in 1775.

References

Wills

John CORNFORD of Warbleton, yeoman, www.ancestry.co.uk, PBT 1/1/57/708, 3 Oct 1748, (3 April 1746), original data: ESBHRO at The Keep.
Samuel CORNFORD the elder of Warbleton, yeoman, www.ancestry.co.uk, PBT 1/1/58/607, 9 Jul 1752, (6 May 1751), original data: ESBHRO at The Keep.
Josiah CORNFORD, carpenter of Battle, Sussex, www.ancestry.co.uk, 15 May 1762, PROB 11/875/451, original data: The National Archives, Kew.
Samuel CORNFORD of Warbleton, yeoman, www.ancestry.co.uk, PBT 1/1/79/810, 18 Aug 1838, (26 Jul 1836), original data: ESBHRO at The Keep.

Records at The Keep

Tithe Records, TDE 50, Warbleton, Nov 1837, ESBHRO at The Keep.

Extra Notes for the CORNFORD PEDIGREE Page 5 of 6

Further research has shown the family were brickmakers with an important presence in their village community. The book 'Brickmaking in Sussex' by Molly Beswick (1993) has a detailed gazette with some historical information about the CORNFORD brickmakers.

Quotes

"The Cornfords, who had owned a small farm in Warbleton from the early 18th century, took up brickmaking at some time before 1796" (Beswick, M. 1993, p.78).

"Brickyard on the east side of Middle Lane, south of Turners Green....in existence by 1796; closed in 1918....Samuel CORNFORD in 1796 followed by several generations of the Cornford family, ending with John from 1890 to 1918 [Samuel junior's grandson].. (1993, p.172).

"Hops were grown extensively in the High Weald of East Sussex....and brickmakers who had some spare land would plant a hop garden and dry the hops in a brick-built oast-house adjacent to the yard.....Samuel Cornford, farmer and brick maker of Warbleton and Heathfield, owned 14 [and a half] acres of land with a house, a barn and an oast-house as well as the brickyard...[now]....converted into a cottage, on the roadside north of Rushlake Green. Hops grown...were generally sold as a cash crop...or used for home-brewed beer" (1993, p.40).

References

Beswick, M (1993) Brickmaking in Sussex, A History and Gazetteer, for the Sussex Industrial Archaeology Society, England: Middleton Press.

Bibliography and References for the CORNFORD Pedigree Page 6 of 6

Beswick, M (1993) Brickmaking in Sussex, A History and Gazetteer, for the Sussex Industrial Archaeology Society, England: Middleton Press.

Davey, R. (1991, East Sussex Land Tax, Sussex Record Society.

Henry, M. (2024) The Oxley Farm Diaries, Vol.104, England: Sussex Record Society and The Sussex Family History Group.

Ancestry

<https://www.ancestry.co.uk>

Find My Past

<https://www.findmypast.co.uk>

The Institute of Heraldic and Genealogical Studies

<https://www.ihgs.ac.uk>

The Keep Archive

<https://www.thekeepinfo>

The Sussex Family History Group

SFHG <https://sfhg.uk> (membership access to the SFHG Data Archive and SFHG Discovery)

SFHG Discovery <https://discovery.sfhg.uk> (access link to SFHG Membership Site)

The Sussex Record Society

SRS <https://www.sussexrecordsociety.org>

The Weald of Kent, Surrey and Sussex

<https://theweald.org>